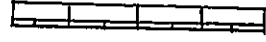
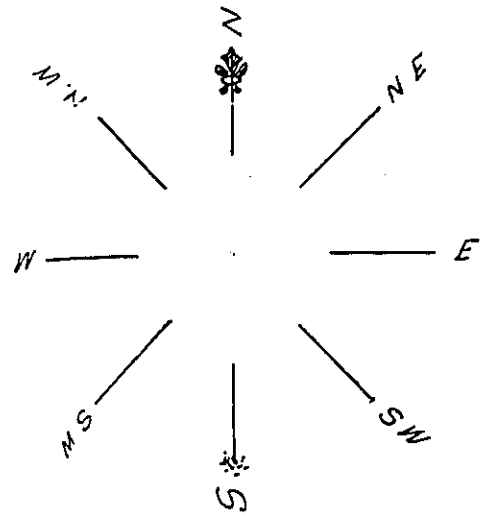
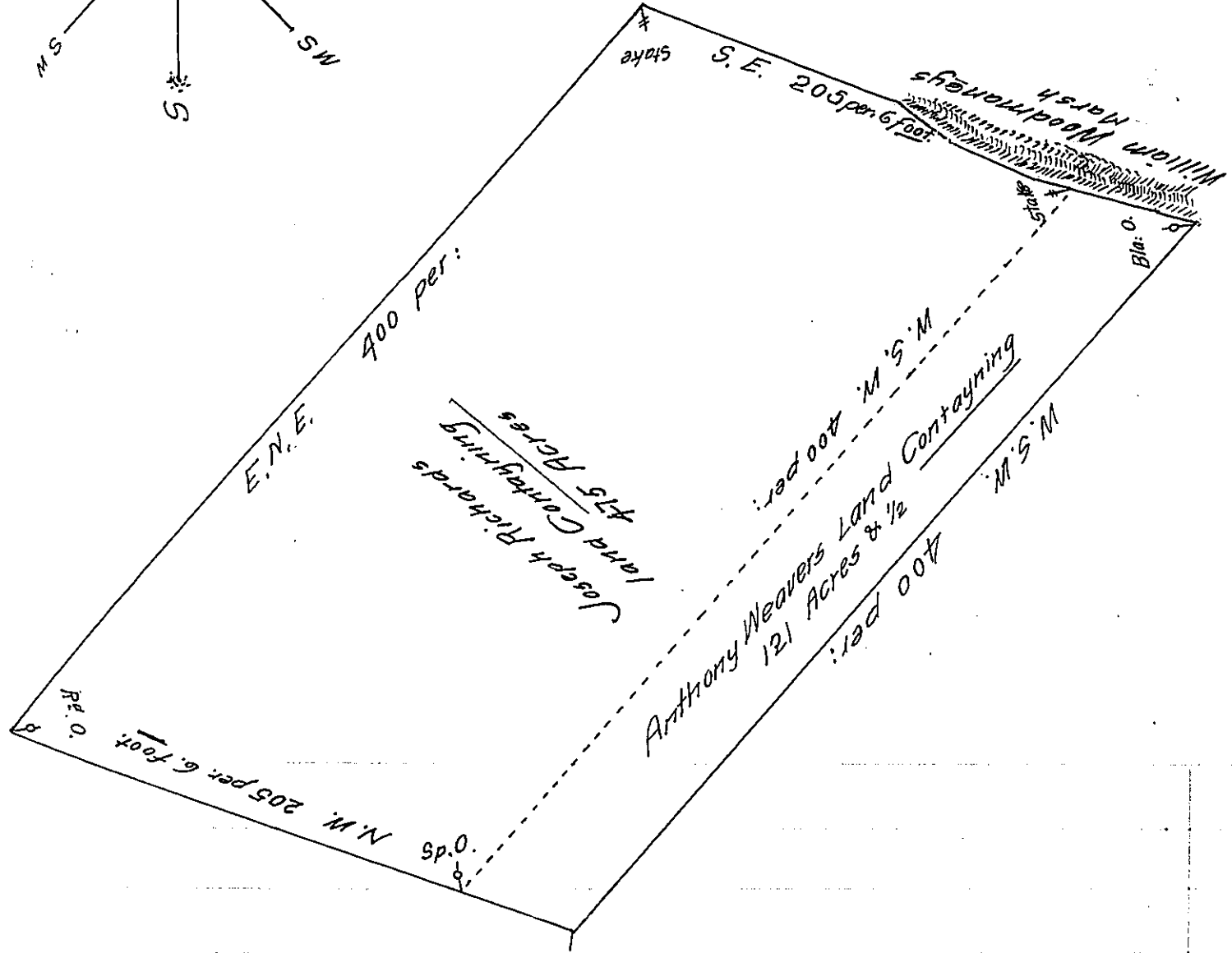


205
10 2 1/2
1 - 25
25



A Scale of 80 perches



front Line of Anthony Weavers Land measured & found to Be
 51 perches 5 foot & 5/8 front Line of Joseph Richards Land
 measured & found to Contain 205 perches 6 foot the 9th of
 the 8th month 1684 J Tho: Pierson

IN TESTIMONY that the above is a copy of the original remaining on file in
 the Department of Internal Affairs of Pennsylvania, made
 conformably to an Act of Assembly approved the 16th day of
 February, 1833, I have hereunto set my Hand and caused
 the Seal of said Department to be affixed at Harrisburg,
 this Seventh day of June, 1910

Nancy Houch
 Secretary of Internal Affairs.